

GIULIANO-FANTI ARCHITETTI

PRESS RELEASE

03.2018

GIULIANO-FANTI ARCHITETTI

Practice profile.

Giuliano-Fanti Architetti is an architecture practice established in 2009, in Paris, by Gaetano Giuliano (Venezia-1970) and Valentina Fanti (Padova-1970).

Since 2013 the office has been relocated in Venice (Italy).

Many national and international experiences have allowed us to develop a special sensibility in the approach of cultural, social and technological changes.

Our office investigates clear architectural solutions, in line with the needs of contemporary way of life, working at different scales of project, from landscape to urban design, from architecture to interior design.

The working method is characterized by a strong craft aptitude. Each project is ap-

proached through a research process with the aim of providing customized solutions, consistent with the needs of the clients and of the context. Great attention is paid to issues of environmental and energy sustainability, to innovative technological solutions and to the appropriate choice of materials.

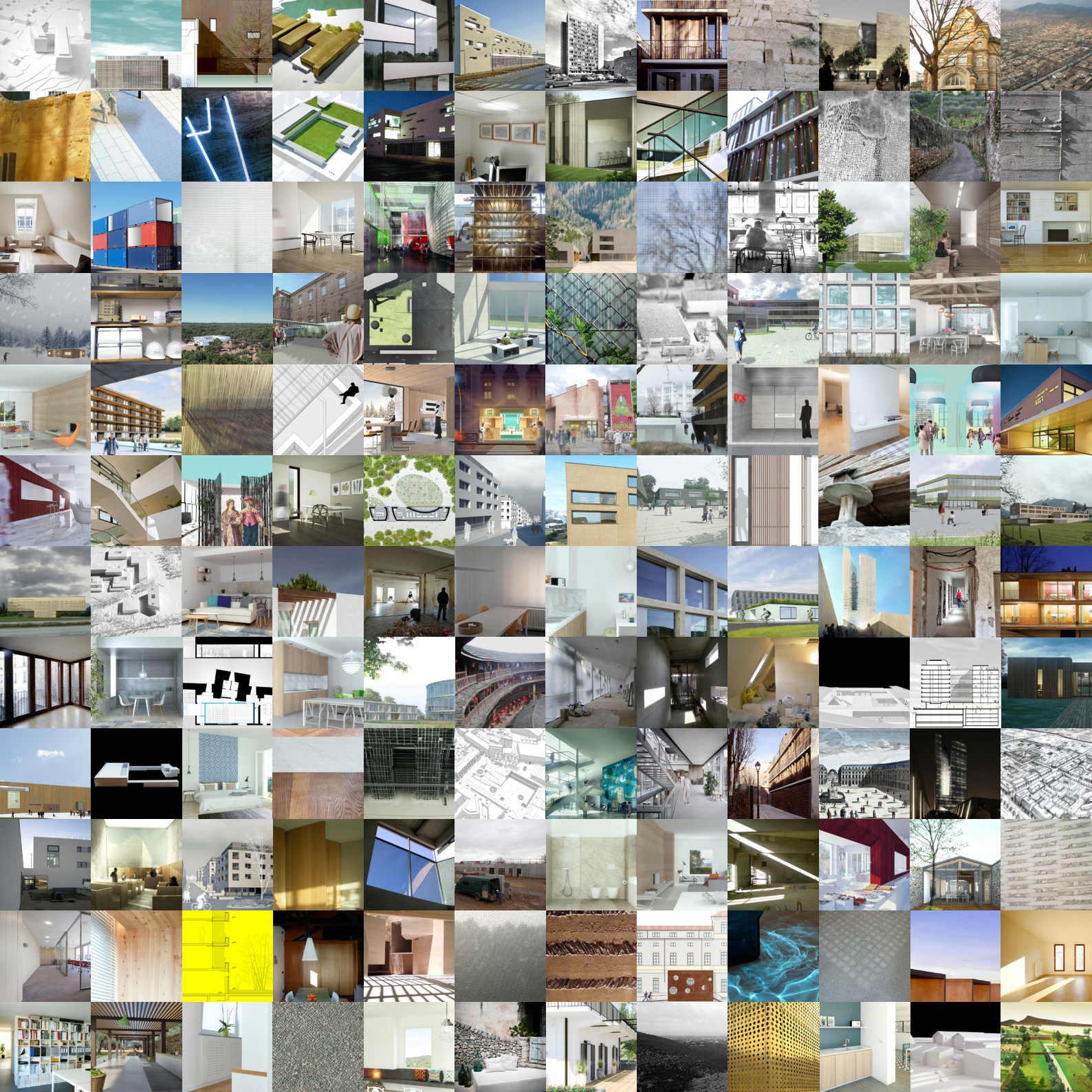
Our team can manage the whole process workflow, working directly or in cooperation with qualified partners, from concept to building permits, from tender design to site survey.

Dynamism, flexibility and efficiency are fundamental elements in the quality of the services we offer, together with a strict management of both schedule and budget.

GIULIANO-FANTI ARCHITETTI

corso del popolo 133
30172 venezia (italy)
p. +39 041.476.37.65
info@gi-f.com
www.gi-f.com





INFANT AND PRIMARY SCHOOL WITH GYMNASIUM

The driving idea guiding our project stems from the challenge of responding to the necessity for urban integration and creating optimum comfort both for the students and the citizens of this village.

The new primary school in Versegères takes place in the center of the plot, in a simple way, giving a new, strong identity to this part of the village.

The choice to let the buildings back from the main road becomes the real backbone of an architectural strategy for a new sequence of public spaces and up to clarify pathways and driveways.

The idea has been translated in a very compact volume, taking into account also the shape and topography of the plot.

To achieve this goal the functional program has been organized into two parallel volumes layed on a common basement.

Between this basement and the upper floors, a filter-floor

connects the interior spaces with the external playgrounds, remembering the void between the stone basement and the upper wooden structure very common in the traditional barns of the Valais region.

Starting from the main road a linear pathway connects the new facilities and even the existing school building, preserved to aloud the creation of additional spaces for the local community.

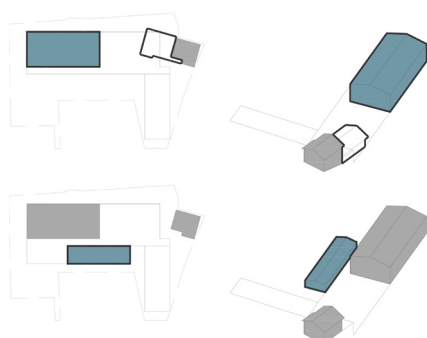
Main functions, such as the classrooms and the service spaces have been separated into two volumes in order to guarantee the best flow organization and thus allow construction of the new school complex in two or, even in three phases.

location: Versegères, Switzerland
client: Valais Local Authority
Municipality of Bagnes
with: OP Associati
TAJANA & Partners
size: 4.200 sqm
budget: € 10.000.000 excl. VAT
phase: international competition
project: 2013

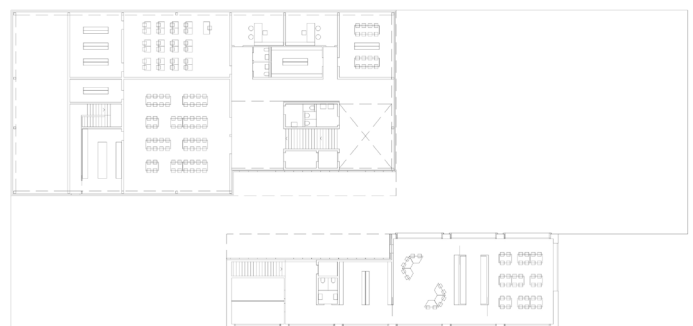




Strategy scheme.



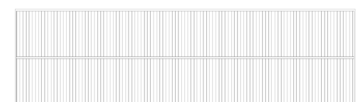
Ground floor plan.





Underground floor plan.

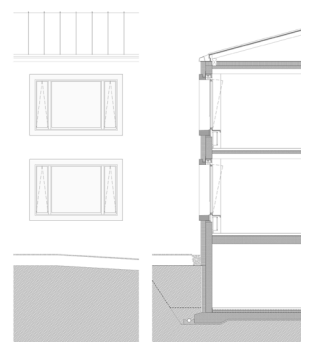
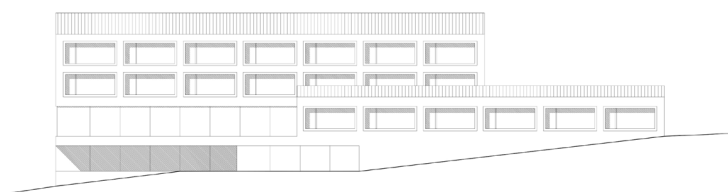
First floor plan.





North-West elevation.

Facade detail.



PRIMARY AND SECONDARY SCHOOL WITH GYMNASIUM

A strategic project providing a social and environmental positive impact on the Campus. The two buildings fully integrates into the exsisting grid as well as they meet high environmental quality standards.

The new buildings for the “Bois-Murat” Campus represent the first stage of the renovation of the entire site.

The issue was to clarify the circulation inside the campus, optimising distances between the different buildings.

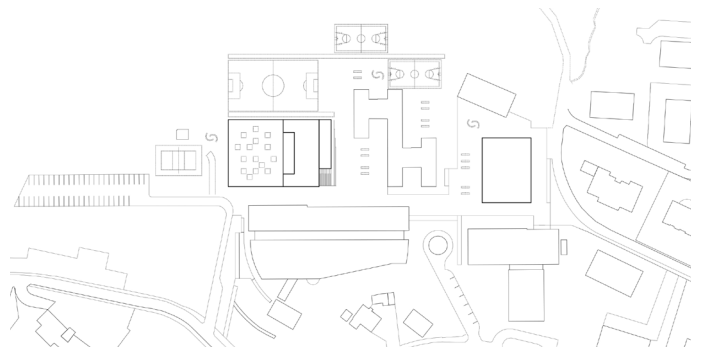
Our solution try to set a new layout for the campus, perhaps not clear at this stage, but surely efficient when the renovation will be accomplished. The first stage of this process contemplate the complete demolition of the gymnasium and the partial demolition of the building that guests the primary school.

The concept is to create a new grid for the campus, starting from the two new buildings. A concrete skeleton measure and order the inner and outer space of those new facilities

that accomodate the primary and secondary school and a new gymnasium, more actual and in line with the regulatory requirements.

Having an unique solution for the two building means to underline a strong will for the campus. All the different functions find place correctly in this three-dimensional grid, rationalizing the functioning of these “*machines pedagogiques*”.

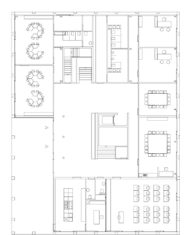
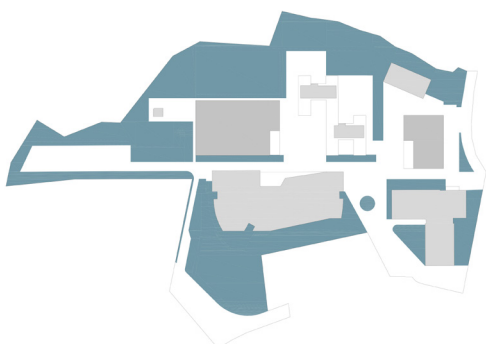
location: Epalinges, Switzerland
client: Municipality of Epalinges
with: TAJANA & Partners
size: 5.800 sqm
budget: € 15.000.000 excl. VAT
phase: international competition
project: 2015





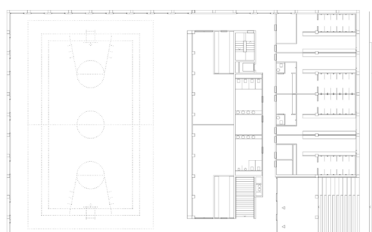
Strategy scheme.

Ground floor plan.

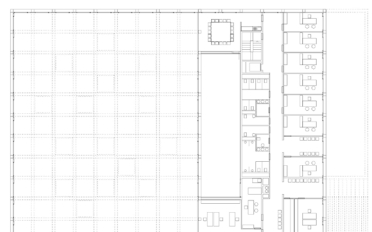




First floor plan.

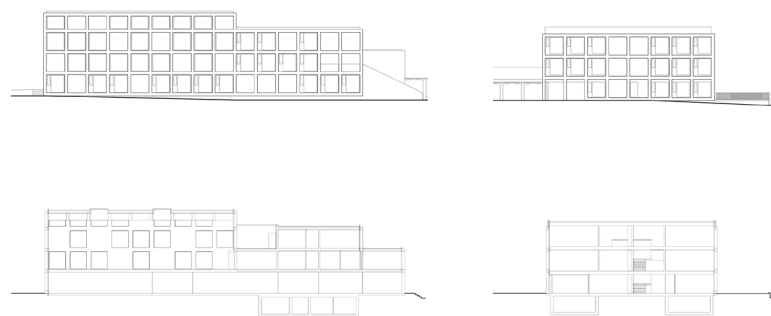


Second floor plan.

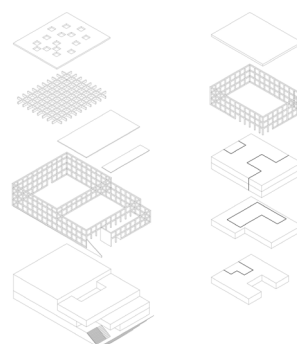




South elevation and section.



Axonometry.



INFANT SCHOOL WITH COMMUNITY CENTRE

An iconic project capable to create a new center. The two buildings are linked by two long porches functioning as urban connections.

In our project, the architectural intention is intimately tied to the choices in construction. This proposal has founded its concept after a deep urban analysis and an identification of the qualities of Molino Nuovo empty spaces.

The design results then from a single pure wave: two main buildings with two levels, connected by two single level porches.

“Trait d’union” of the whole composition is its own rooftop, which gives a dimension to the entire site and replaces buildings to a human scale.

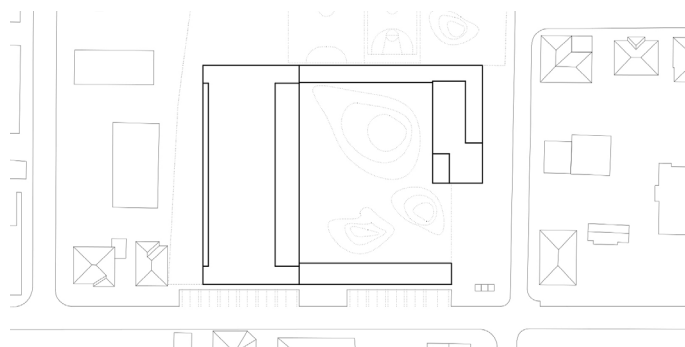
The new complex in this way unifies, identifies and orders.

The building becomes an inhabited fence for the green spaces and playgrounds: volumes take shape from empty forms.

Along via Giovanni Ferri there is the fenced front of the complex, aligned with the adjacent buildings. The volume of the new Molino Nuovo infant school is balanced by the long wall which support the entrance porch, a real urban banner.

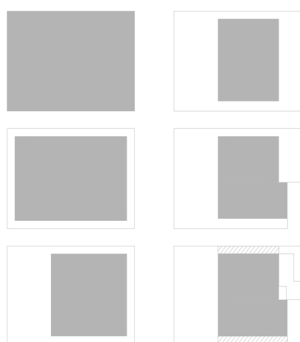
The urban elevation is then reconstructed and the different scale with the surrounding buildings denounces the social function of the new facility.

location: Lugano, Switzerland
client: Municipality of Lugano
with: AIIC Ingénierie
size: 3.900 sqm
budget: € 9.500.000 excl. VAT
phase: international competition
project: 2011

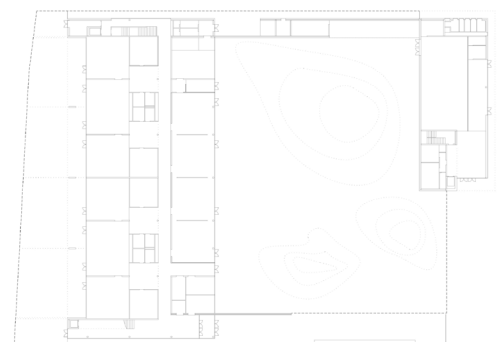




Strategy scheme.



Ground floor plan.

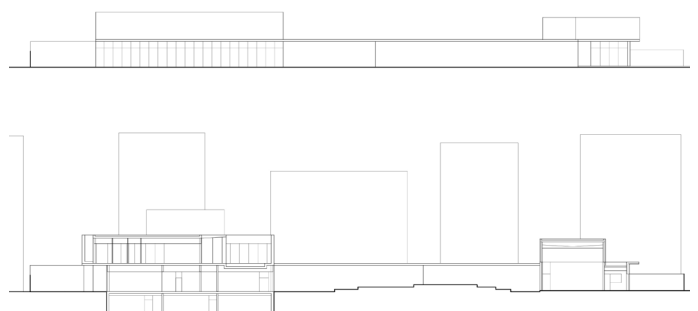




First floor plan.



South elevation and section.



STUDENT HOUSING AND COMMUNITY CENTRE

The site strategic position at the junction of several streets in a bustling Milan district brought our research towards a lively façade providing views into the heart of the site and encouraging appreciation of this inner space.

In the context of the campus “Collegio di Milano”, nowadays characterized by the presence of two stand-alone blocks placed in a wide greenery, we were asked to design a third building, to expand the accommodation capacity.

The design concept is inspired by two strong suggestions: the open courtyard and the typical Milan balcony houses.

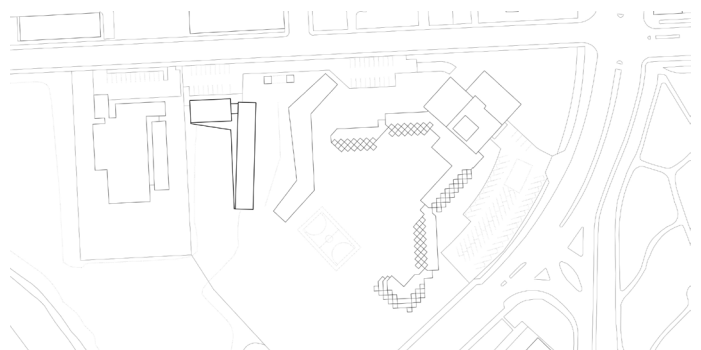
On the one hand, the research around the spatial value of former Lombard farmhouses, lead us to shape a lowered basement. On the other, the design uses a local typological element, like the open-air gallery, which provides for the presence, at each floor, of housing units sharing the same balcony.

The new building, with these premises, has been composed

as the superposition of two parts: an articulated basement that fills the height difference of the site and hosts community facilities; a linear superposed block, four-floors height, hosting 52 single bedrooms served by open-air galleries. Both of these parts, thanks to their geometry and function, overlook an open lowered courtyard, covered with grass.

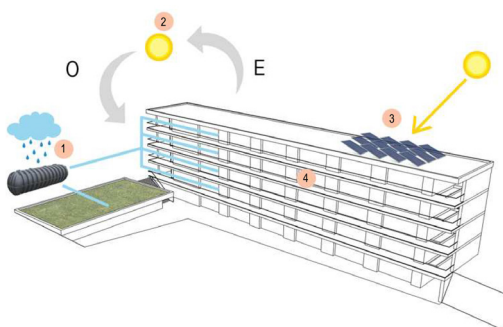
This composition, simple but efficient, will facilitate the active participation of resident students in the community in which they will live in, so that they will easily become “citizen-users”, exploiting the urban values of the new complex and enjoying the offered facilities.

location: Milano, Italy
client: University Foundation
with: WOOD CAPE
BPZ Ingegneria
size: 1.100 sqm
budget: € 3.200.000 excl. VAT
phase: feasibility study
project: 2016

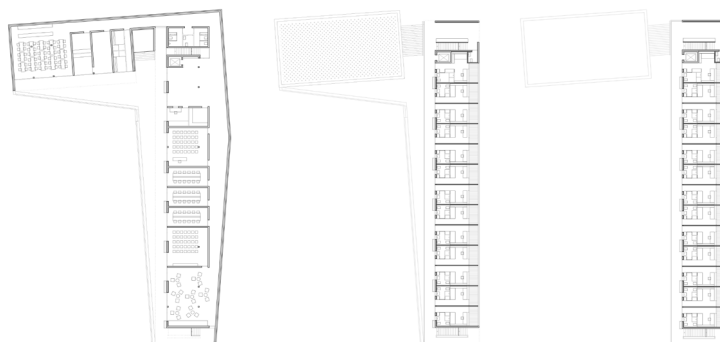




Strategy scheme.

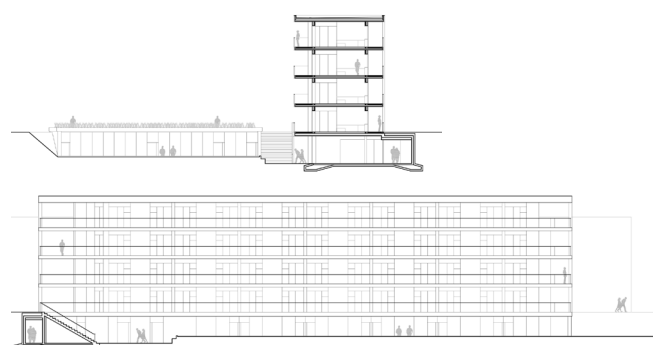


Floor plans.

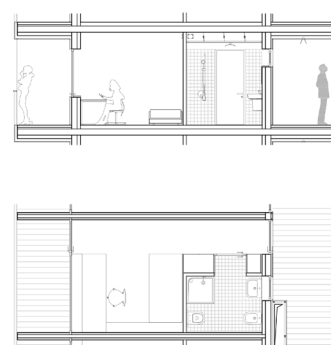




West elevation and section.



Room details.



COMMUNITY AND CARE CENTRE WITH APARTMENTS

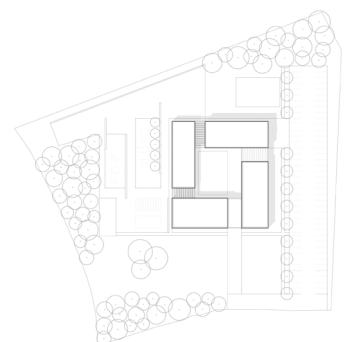
Having to deal with a lot of abandoned land, a “terrain vague” in the middle of a fragmented urban environment, our will was to create an inner void inside an empty space.

The reference image has been a clearing in a forest, an introverted and quite place protected from the surrounding chaos, a place where the guests could find the peace needed to deal with their difficulties. An oasis surrounded by greenery. We decided to design low volumes, self-enclosed, but with the open view on the surrounding garden. The references that inspired the project remind to atmospheres typical of this region, where very often the country houses were closed by a fence, a high wall or by some service volumes, creating beautiful courtyards that became the real heart of family life.

These are the items that led us to imagine a low building, with a courtyard, generated by four pure volumes. The only var-

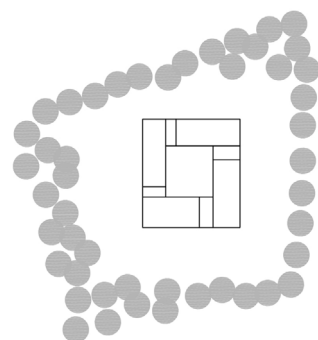
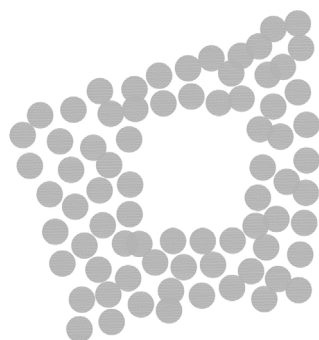
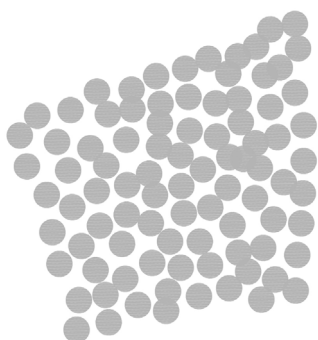
iation is given by the blocks height difference. These small variations are an asset of the project and, in particular, of the inner courtyard, designed as a real outdoor room. Even the internal distribution undergoes the evocative power of this space, so that all the access to the main living areas are directly made from the courtyard itself. Real beating heart of activity and potential, the inner courtyard could be used, from time to time, as a space for group dinners, discussions, games, screenings, concerts, parties or simply as a connection gateway.

location: Catania, Italy
client: LAD ONLUS Association
with: ALGA Studio
size: 1.270 sqm
budget: € 1.255.000 excl. VAT
phase: competition (mention)
project: 2014



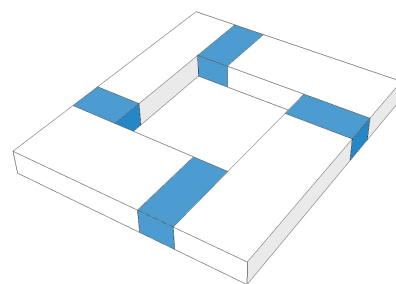
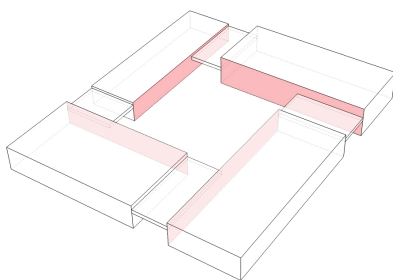
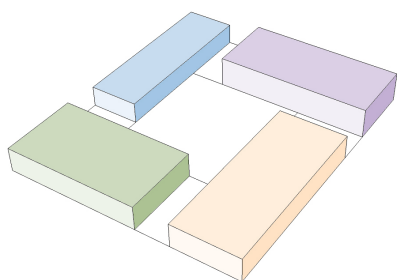


Strategy scheme.





Functional scheme.

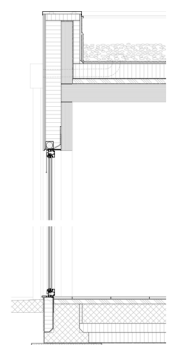




Floor plan.



Facade detail.



EURE CHAMBER OF COMMERCE HEADQUARTER

The idea was, since the competition stage, to have an horizontal building along the road to Evreux. The façade facing this road underlines this will.

The project wants to be a signal. Sign of an institutional presence within activities that the Chamber of Commerce et Industry represents.

Sign of an entrance to the city since the new building is located beside the exit of the RN13, the main entry to Evreux.

The building is square shaped. The west wing houses the offices, north-south oriented. The east one houses the conference facilities. This figure, by setting up on the plot, directs the site, creating a front and a back. The front, largely public and institutional, monumentalizes the access for visitors to the site. It gives a new strong identity to this place; the rear has, on the contrary, a more private status.

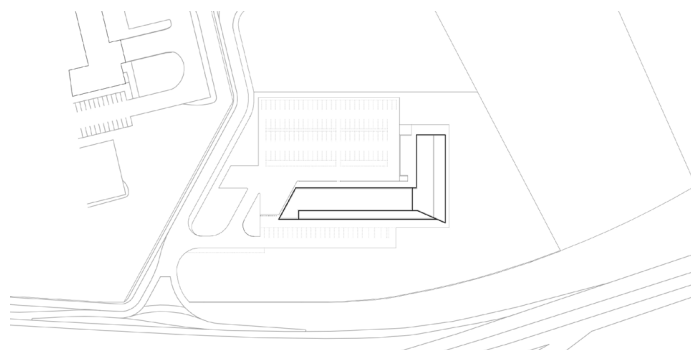
The main hall is naturally lo-

cated at the intersection of these elementary volumes. The joint allows a clear identification of the entrance and the creation of a large square just in front of the southern façade.

Facing to renewable energies, the project has an overall annual consumption of 65 kW/m²/year (excluding all the office equipments).

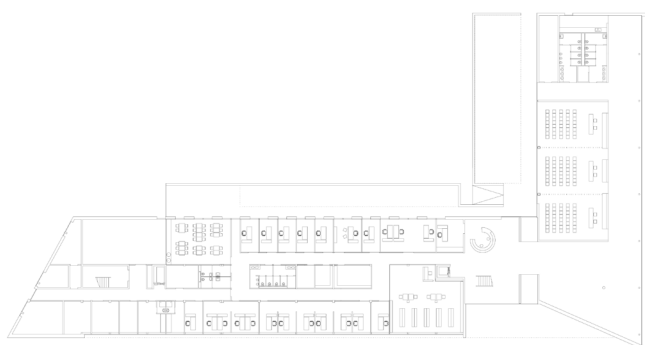
Energy savings procured therefore an amount around 180 000 kW/year.

location: Evreux, France
client: CCIE
Eure Regional Authority
with: ENIA Architectes
IOSIS Centre-Ouest
ELIOTH
ECIB Economistes
size: 3.170 sqm
budget: € 6.100.000 excl. VAT
phase: completed
project: 2008-2010
worksite: 2010-2011

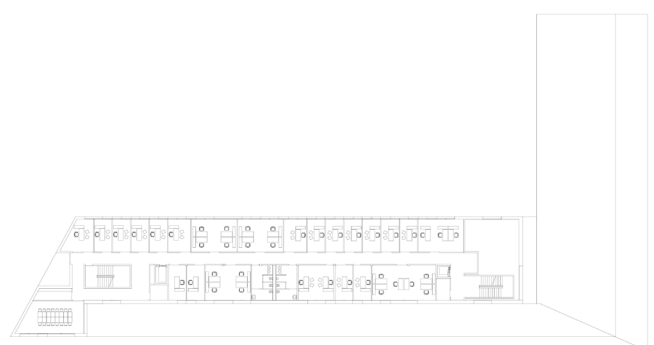




Ground floor plan.

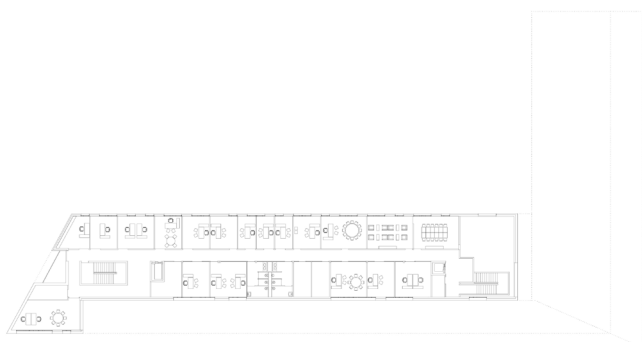


First floor plan.

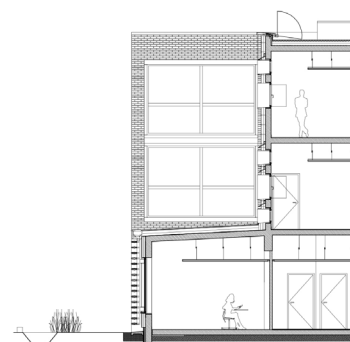




Second floor plan.

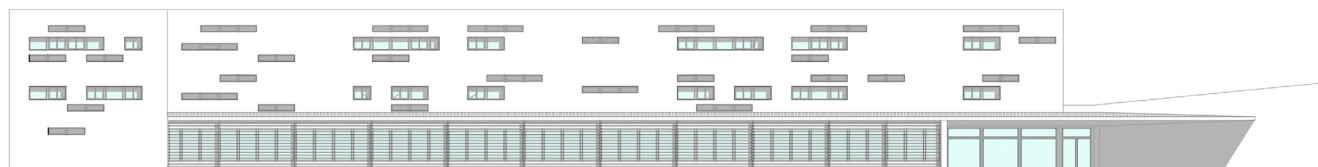


Section.





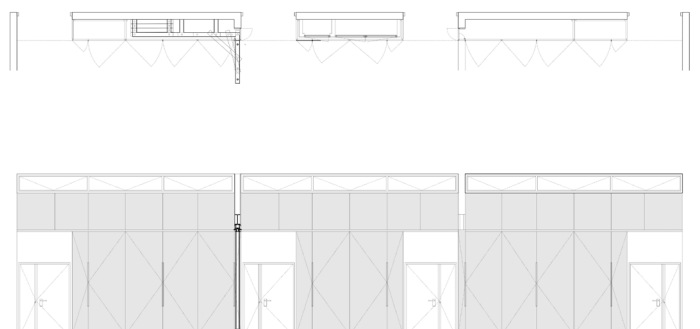
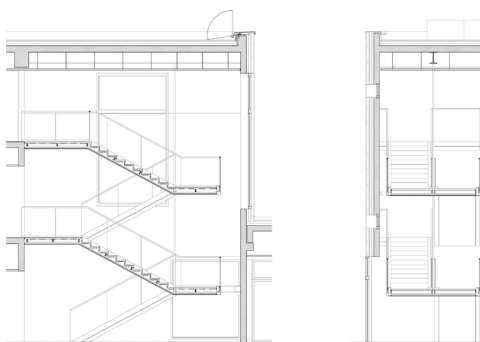
South elevation.





Main staircase details.

Interior details



SOCIAL HOUSING WITH CHILD-CARE CENTRE

Thanks to two neatly designed interior gardens, and the long line of the main façade, the different functions are all double-oriented.

Our project engages an equilibrium between the full and the void, in other words between interior and exterior spaces, approaching both as materials of the project.

The specificity of this proposal can be founded in its location and within a very heterogeneous urban block. Open spaces are the link between the different entities.

The implementation of the new building must be attempted to establish a dialogue between them and it shall become the starting point for future projects. Interior spaces and exterior ones are treated by their association, generating many continuities. The entire spatial organization of the nursery school focuses on children dedicated areas, largely glazed and

opened toward the outside space, even if already shaded from the sun.

In strict compliance with Paris zoning regulations and with the desire to design simple volumes and a current floor plan very clear and comfortable, the apartments are organized around a single vertical core serving four units each floor. At the attique floor the apartments are surrounded by large terraces, meanwhile the two current levels are characterized by wooden mobile curtains and continuous balconies.

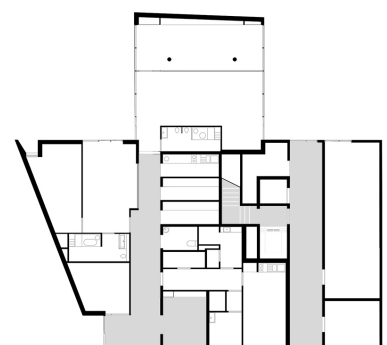
A standardisation for the façades' framework has allowed for the provision of retified woodwork and wooden panels which stand out on a vertical line for all facades.

location: Paris, France
client: SIEMP
Municipality of Paris
with: NAUD&POUX Architectes
AIC Ingénierie
Cabinet CHOLLEY
size: 1.250 sqm
budget: € 2.300.000 excl. VAT
phase: completed
project: 2004-2005
worksite: 2007-2009





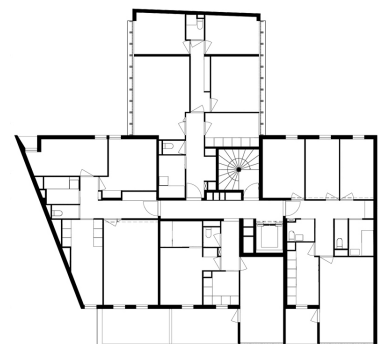
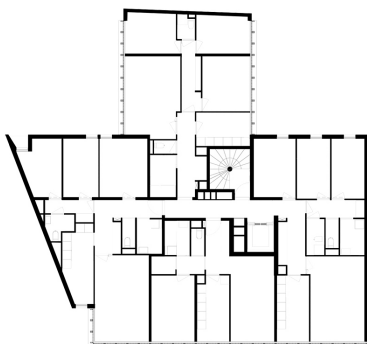
Ground floor plan.

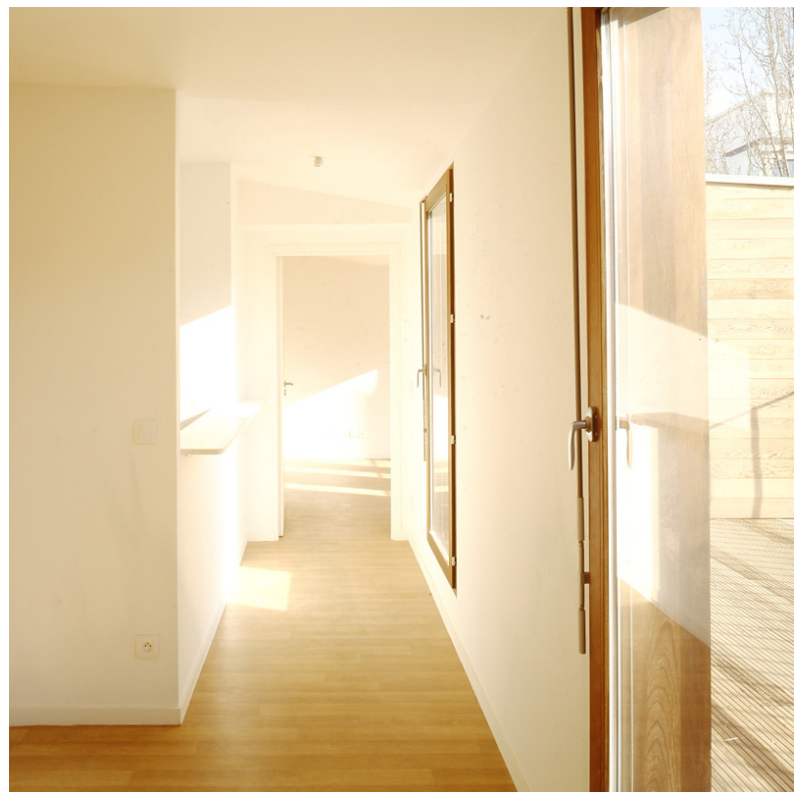




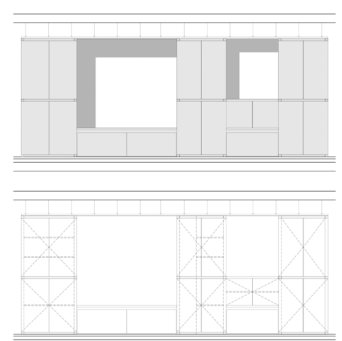
First floor plan.

Second floor plan.





Interior detail.



JEWISH SYNAGOGUE WITH LIBRARY AND GUESTHOUSE

A monolithic volume that, taking as a reference the Jerusalem Wailing Wall, wants to be a stronghold for the Jewish Community of Potsdam.

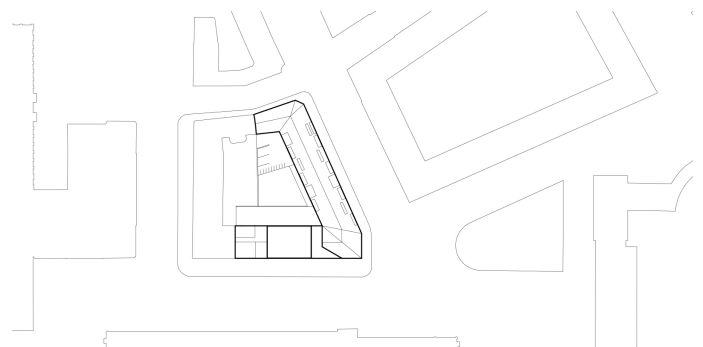
The genesis of the new synagogue for the Potsdam Jewish Community can be founded in the Jerusalem Wailing Wall. Beyond its extreme importance in the Jewish culture, the overall dimension scale of this masterpiece was taken as a guide reference for the design of the new worship complex.

On one hand, the new building fits into the historical Potsdam grid with its neo-classical buildings by finding strict alignments with beside constructions; at the same time, the new architecture wants to assert and declare his presence and function especially by its own materials: a monolith stone volume with ashlar differently treated for size and finishing.

The transparent and trans-

lucent part of the façades are measured to maximize the use and comfort of interior spaces. Natural light, playing with the stone cladding, enhances the sacredness of this place.

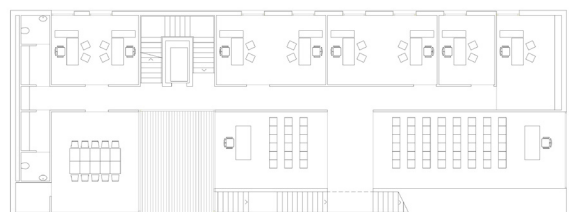
location: Potsdam, Germany
client: Land Brandenburg
Potsdam Jewish Comm.
with: IOSIS Centre-Ouest
size: 4.800 sqm
budget: € 8.000.000 excl. VAT
phase: international competition
project: 2009





Ground floor plan.

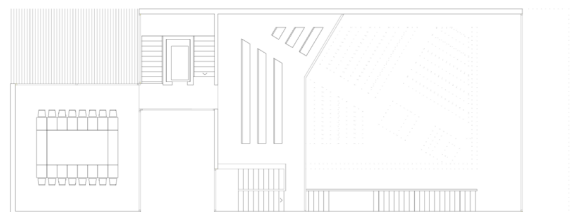
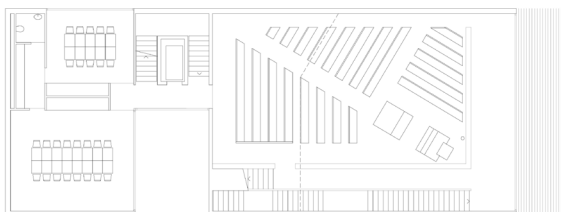
First floor plan.

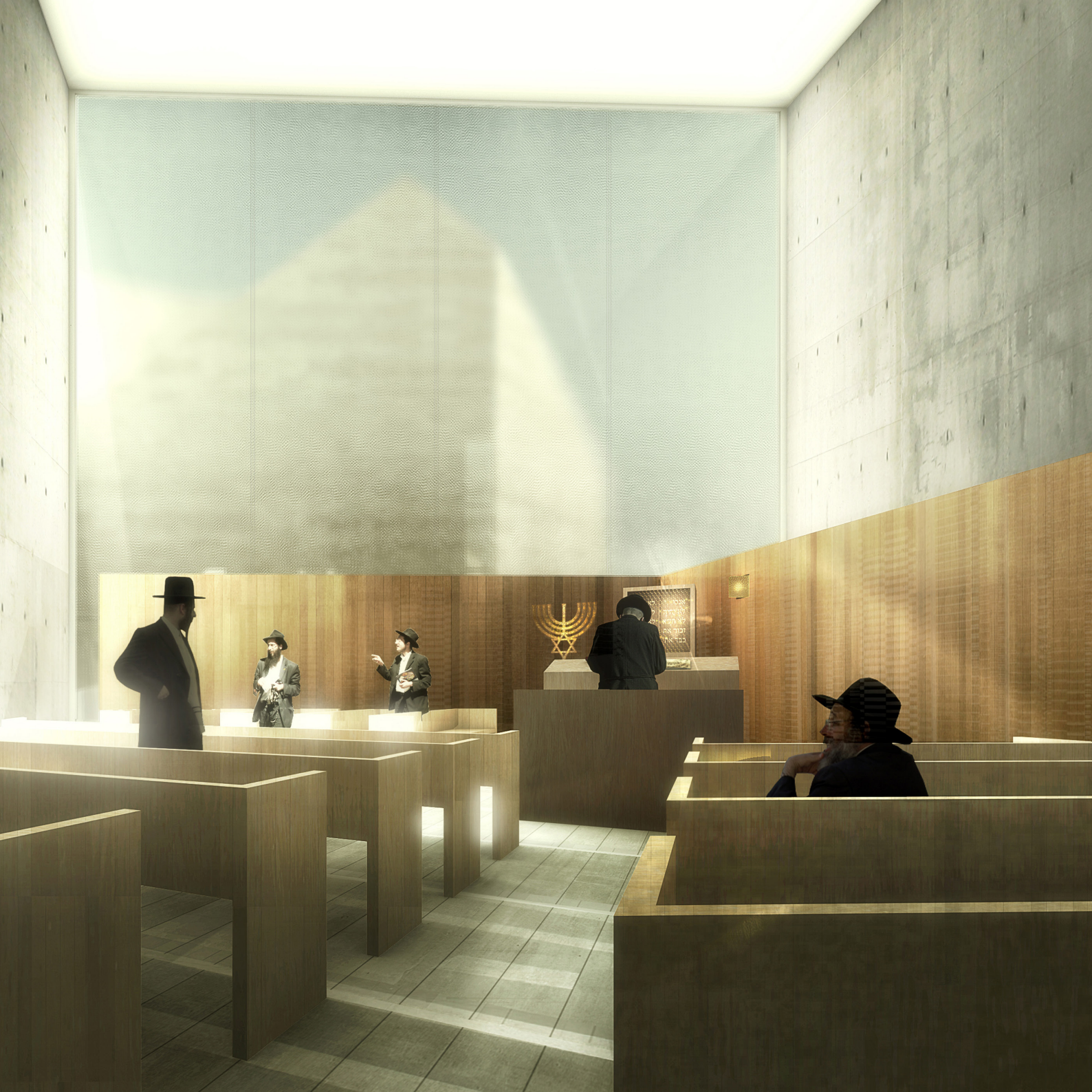




Second floor plan.

Third floor plan.





Sections.



ARAB-SOUTH AMERICAN PUBLIC LIBRARY

The concept for this project represents the will to design an iconic knowledge tower. Two cultures, each one with its own identity, but with a common podium

The project for the Arab-South American new public library finds its origin in the desire to assert clearly, almost literally, the duality of the program: while it is composed by two entities (representing two cultures), these two entities are closely connected, sharing a common basement of knowledge and history.

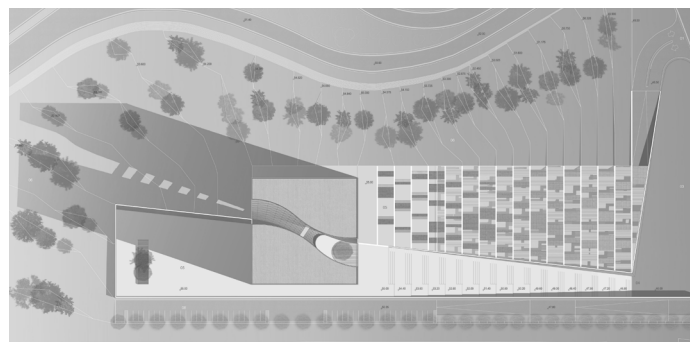
The geographic analogy of continental drift seems to be so strong and quite obvious. Plate tectonics explains their current form by this theory: at the origin the African and American continents formed just one land; they slowly split into two separate entities. However, both of them have retained in their shape, the memory of the other.

The project takes this beautiful image: two parts, each one

representing a culture leaned on a common core, each having a shape that get married to the other one.

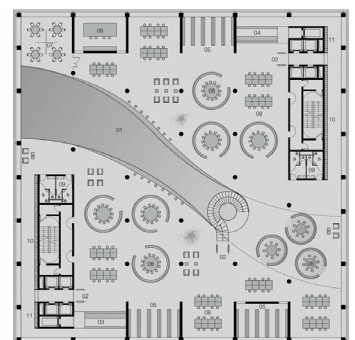
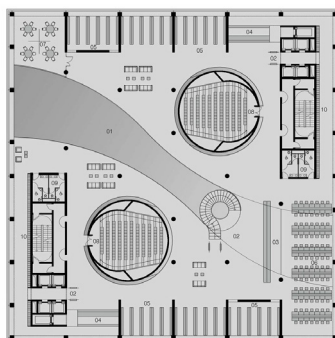
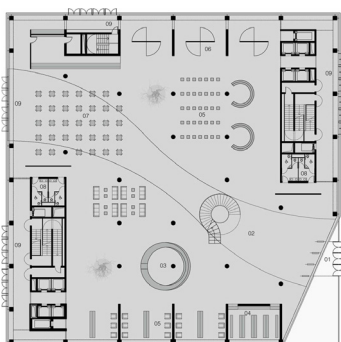
In this way, the building is formed by a single volume for the first five floors, then it splits into two different towers facing each other till the rooftop.

location: Zeralda, Algeria
client: Ministry of Culture of Algeria
with: ENIA Architectes
IOSIS
STUDI Ingénierie
size: 67.300 sqm
budget: € 109.000.000 excl. VAT
phase: international competition (mention)
project: 2008



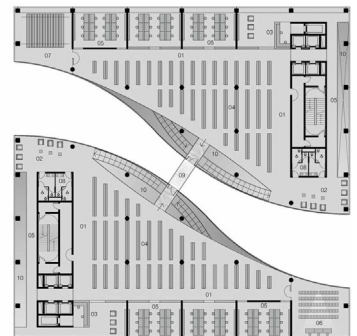
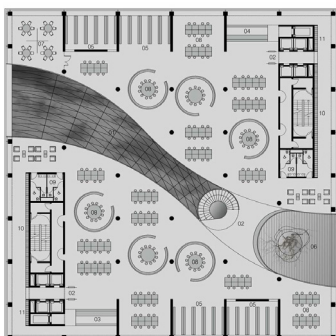


Floor plans.





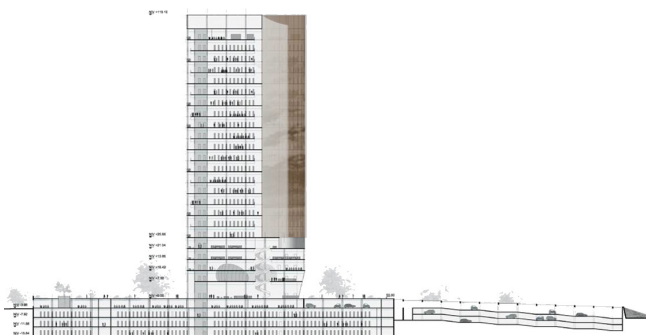
Floor plans.





Section.

Section detail.



DEPARTMENT BUILDING, AUDITORIUMS AND LIBRARY

The project is developed in a double scale perspective: one in the street's scale and the other in the courtyard one.

The strategy aims to find the best solution for the campus, extending the voids of the tissue into the new facility.

The new department building for the Tohannic University Campus in Vannes has been organized as a rectangular rigorous and compact block which marks a substantial break with the formal heterogeneity of existing buildings. It is articulated around three generous courtyards which become the project main signature, both in a functional and in a formal way. These huge courtyards are places of relaxation and leisure but, at the same time, they offer a quiet and ideal condition to learn peacefully.

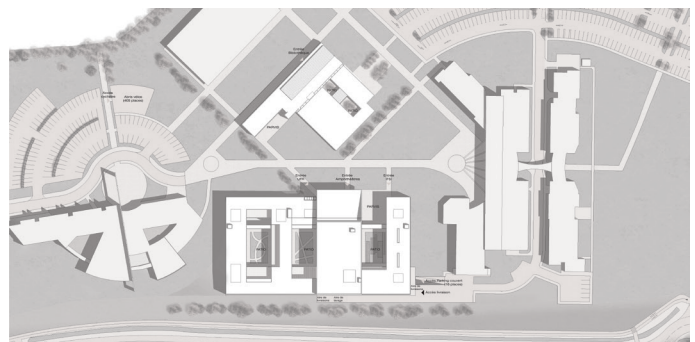
They provide a real visual comfort as well as they are very important up to renewable energies (limited wind effects and therefore the heat loss associated with convection).

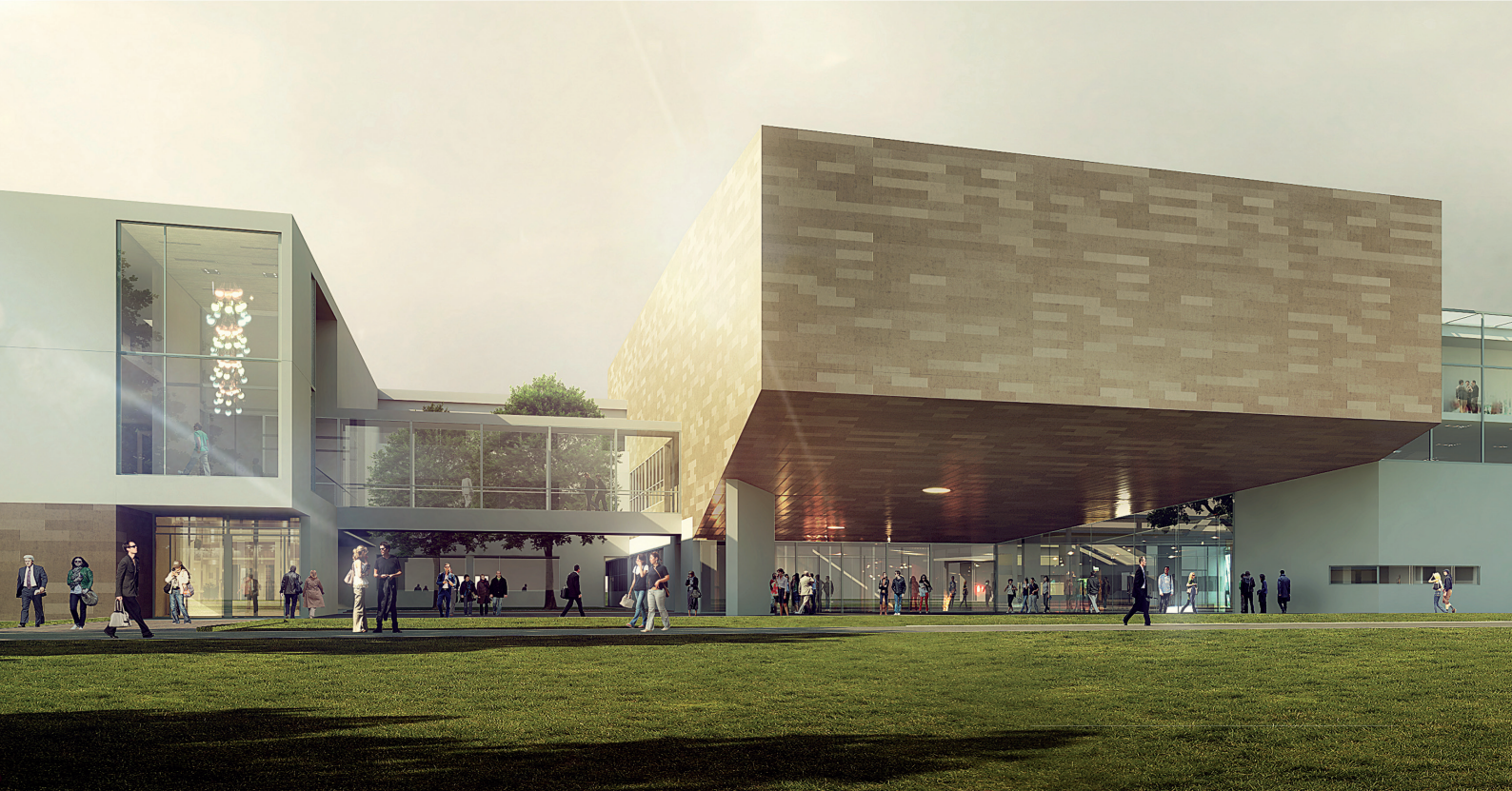
At the same time, solar gains are controlled because of the masking effects created by the façades.

The project morphology clearly expresses the functioning of the building and underlines the identity of the IFSI and UFR departments. The large monumental volume at the centre of the block wants to clarify the sharing of common facilities: the amphitheatres become the link between these two entities.

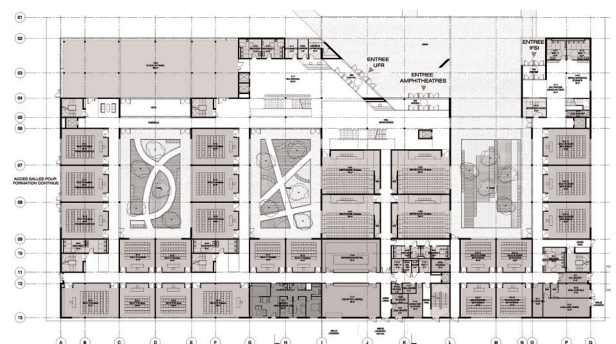
The cantilevered volume of the amphitheatres creates a spectacular event to shape a majestic entrance to the new facility.

location: Vannes, France
client: South Britain University
Municipality of Vannes
with: ENIA Architectes
IOSIS Centre-Ouest
size: 10.600 sqm
budget: € 17.200.000 excl. VAT
phase: competition (3rd prize)
project: 2010





Ground floor plan.

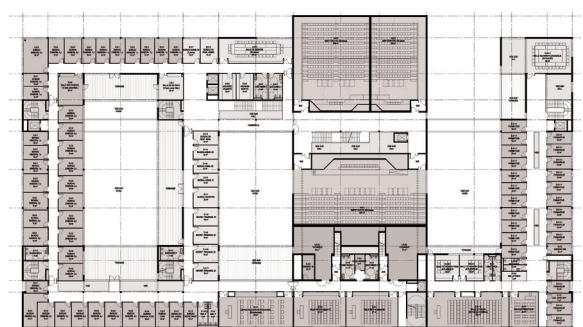




First floor plan.



Second floor plan.





Section.

